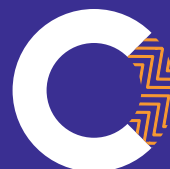




How to make your giving go further.



**Community
Foundations
of NZ**

Hei whakakaha i ngā
hāpori o Aotearoa

Loco





Introducing a unique way to give.

With Community Foundations, you don't have to be wealthy to have an impact. Whether it's a large or small gift, a one off or regular contribution, all giving makes a difference through us. Our smarter giving model allows your giving to have benefits that last forever.

We're different because we're not about one single cause; we're about a place and its people. Through us you can choose which significant local projects and causes to invest in to help transform our community.

Based on a well-established, globally successful model, the network has been growing in New Zealand since 2003. Community Foundations are independent, not-for-profit organisations found in most regions across the country. We run a lean model so we can keep fees low, and we are governed entirely by volunteer boards.

Give

**We make it
easy for you
to impact the
community
you love, now
and forever.**



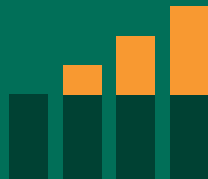
Our smarter giving model sets us apart from other charities. With us, your generosity can have impact for many, many years.

Here's how it works

Donations can be invested so they can grow and become long-term reliable funding streams. It's the income your giving earns that is distributed to worthy, local causes every year; the original gift itself remains protected so it can continue to benefit your chosen causes in your community well into the future.



Your gift



**is invested
and grown**



**and the
ongoing income
earned**



**goes to the
local causes
you love.**

Care





You can choose who, what and how your giving benefits.

Community Foundations are local organisations with deep roots in our local areas who can ensure your giving is influencing the causes you care about most. Whether it's the arts, education, environment, health, sports, heritage, youth development, te ao Māori or another cause close to your heart, we can work with you to find a way to give that works for you.

Your gift. Your say. We have different ways you can give and donations of any size are welcome.

Give while you live

Make a one-off donation or regular contributions to an existing fund that's been set up to achieve good, long-term. One-off donations can also begin to build your own Named Endowment Fund.

Leave a gift in your will

You can choose to leave a gift in your will to causes close to your heart. The gift can be a percentage of your estate or a specified sum. It is entirely your choice.

Give to an existing fund

There may already be a fund set up that's working towards something you care about. Or you can contribute to the collective pool of the general fund and leave it to us to channel funds where they are needed most.

Set up a new fund

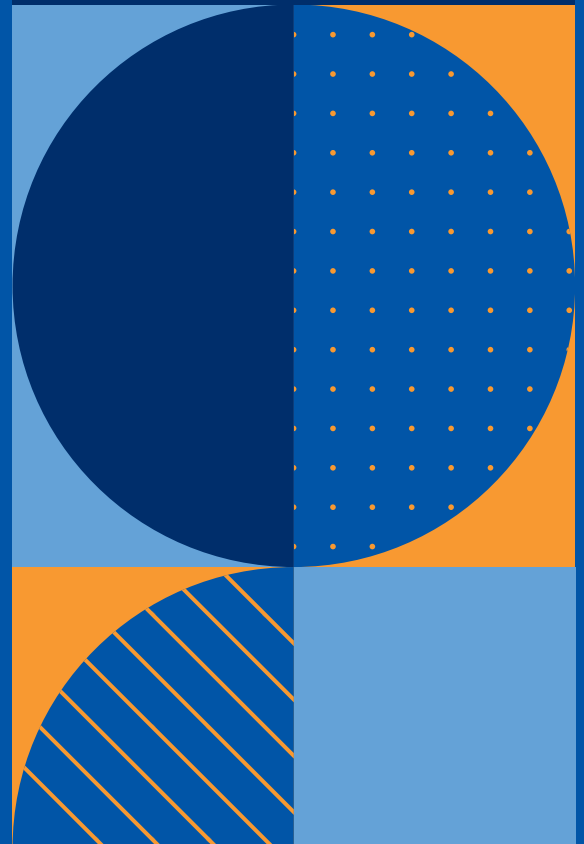
Gifts of significant size can be eligible to become your own Named Endowment Fund. You can choose the name and which charities or causes will receive donations from the Fund's income. And you or your descendants will receive annual reports on earnings and distributions from your Fund.

Give as part of a group

Workplace giving is a way for employers and groups of employees to give back to their community. We can help companies set up regular giving via their payroll system.

Giving Circles are a gathering of like-minded people pooling their financial resources and collectively contributing to a better society. We can help get your group started.

Donations made during your lifetime qualify for a tax rebate of 33.3% up to the limit of your taxable income.



Positively change your community forever.

**When you're ready, here's how
we can help you:**

- Determine what you most love and care about in your community and showing you how you could support and impact causes that matter to you
- Providing information on giving strategies
- Connecting you with local causes, programmes or charities doing good work in your community
- Tailoring a plan of how you would like your money to be used
- Simplifying the process by managing all admin, investments and distributing the income – you get to say where your gift goes, which is the best bit!



**To find your region's local
community foundation, visit:**

communityfoundations.org.nz/regions

Proudly supported by:



**PLATO
CREATIVE**

**Through your local
Community
Foundation,
your giving can
go much further
towards supporting
what you truly care
about forever.**

communityfoundations.org.nz

